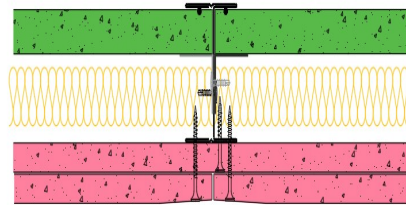


SE60-S-61(25) - SPEEDLINE System Data Sheet - Version V1 (24-10-23)

SPEEDLINE 60mm 'I' Stud Shaft Encasement
@600mm Ctrs, with 2x Siniat GTEC 12.5mm Fire
Board, Siniat GTEC 19mm Fire CoreBoard, 25mm
APR



System Performance Breakdown

Fire Resistance:
BS476 Part 22:1987:

60/60 FromBothSides Minutes (Integrity/Insulation).
See note 3 below

Test Ref & Date or Applied Ref & Report:
Max Height:

- **BRE Report P102396-1012C**
Refer to Speedline Specification Clause

Thickness:

87 mm. (At Base Track, Excluding Finishes)

Duty Grade: BS 5234: Part 2:1992:

Severe - Annexes A-F

Sound Insulation:

46 R_wdB, Date Tested or Assessed Against -

³Note: When exposed to fire on the landing side, these systems did not satisfy the insulation performance criteria on the framing members. Therefore, when specifying this system, it must be checked with the relevant approval authority, for the building project that this is acceptable, perhaps on the grounds that there will be no combustible material in close proximity, of the framing sections within the shaft.

TESTED AT ONE OF THE UKAS
ACCREDITED LABORATORIES
BELOW

B.T.C
(H-Ref on Graph)



B.R.E



AIRO



S.R.L

